

Restrict oscilloscope configuration files to configuration information only

Purpose

Oscilloscope configuration files (*.los) can contain configuration information as well as the measurement data of an oscilloscope recording. This makes the file unnecessarily large as a file, e.g. when used as input for the Drives DataHub.

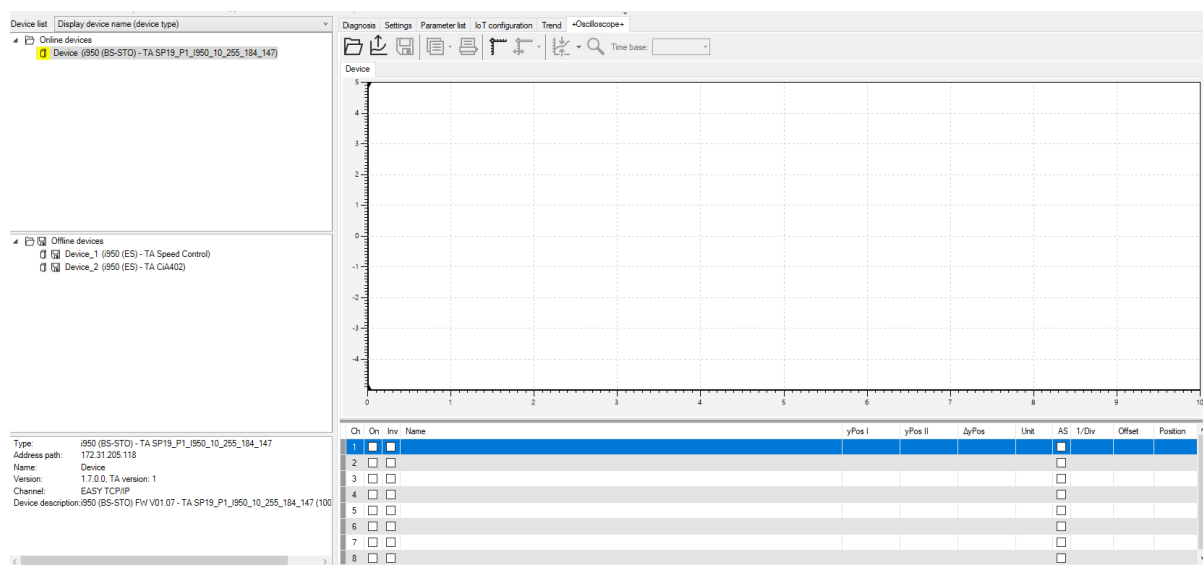
The EASY Starter can be used to extract the measurement data so that only the configuration information remains in a file. The required steps are described below.

Workflow

Initial situation: There is an oscilloscope configuration file (*.los) with measurement data (e.g. > 50 kByte). The device type for which the los file was created is known.

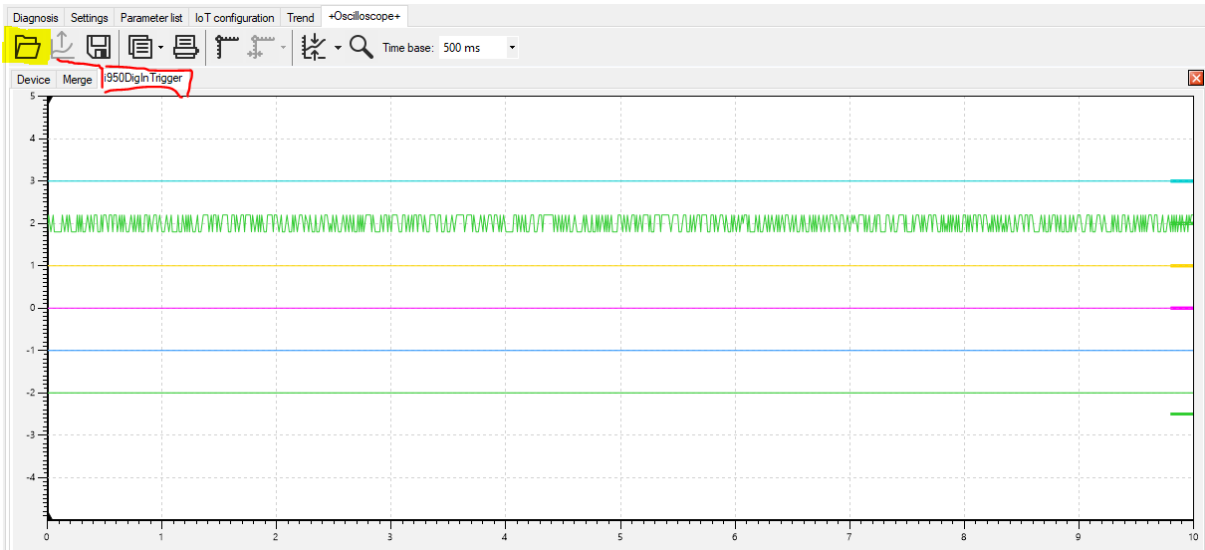
Insert device

Start the EASY Starter and create an offline device of type los file. Alternatively, you can also connect to a device (of the appropriate type) online.



Open los file

In the Oscilloscope tab, open the los file you want to adjust.

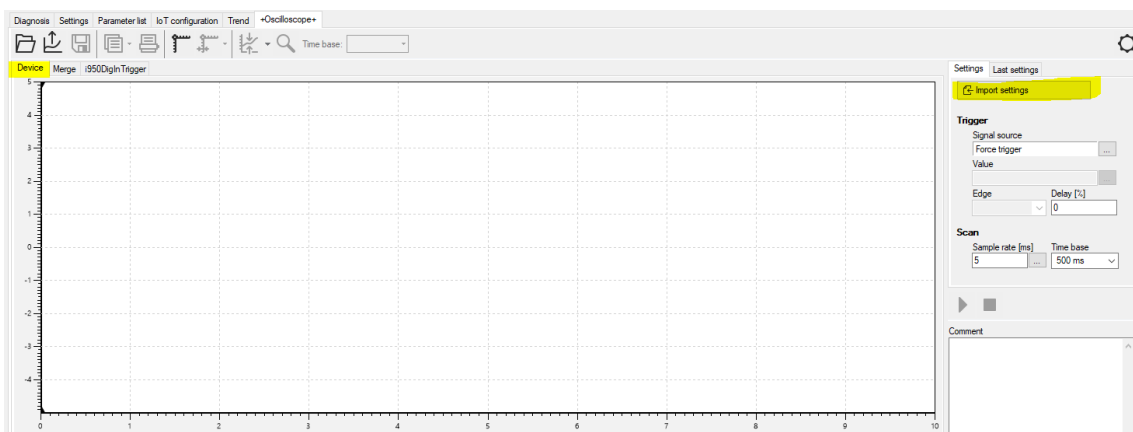


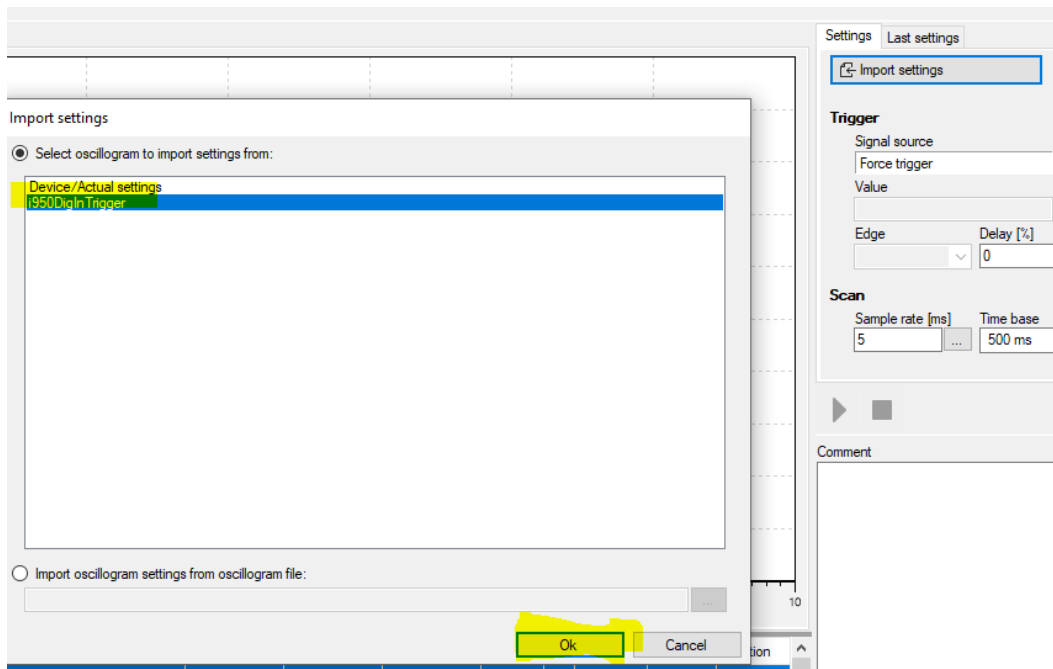
Import settings

Switch back to the default device view, which should be empty.

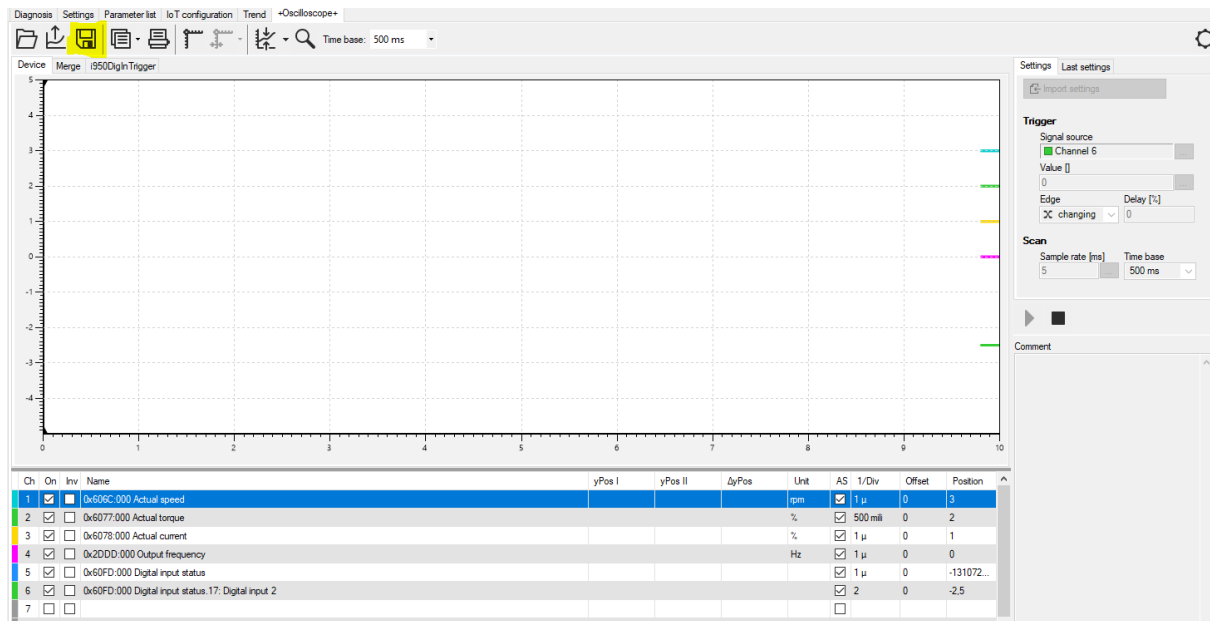
Call the "Import settings" function and select the loose file as input.

The channels and other configurations are then adopted.





Save 'new' los file
Save the oscilloscope configuration.



The changed los file should be much smaller. The file can be also saved with a new name.