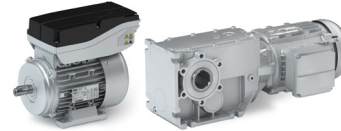




Country Fact Sheet Motors

USA



Regional Characteristics																	
Voltage	3 ~ 460V ± 10% 1 ~ 208V ± 10%																
Frequency	60 Hz																
Approval Mark	UL recognized or UL listed																
Standard	UL 1004																
Scope	Not mandatory but strict market requirement due to insurance and employer safety reasons. Proofs the accordance with UL standards and verifies product testing regarding safety aspects like flammability.																
Marking	 																
Energy Efficiency	UL energy verified																
Regional Standard	CSA-C390-10																
Regulation	DOE 10 CFR Part 431																
Mandatory Efficiency Class	Premium (equates to IE3)																
Scope	<ul style="list-style-type: none"> - Rated output power from 1HP (0.75 kW) up to 500 HP (375 kW) - Rated voltage up to 600 V - Rated frequency 50 and 60 Hz - 2-, 4-, 6- and 8-pole - For continuous duty operation 																
Exemptions	<ul style="list-style-type: none"> - Intermittent duty like S3 or S6 (duty factor <80%) - Motors for heavy environmental conditions like ambient temperature above +60°C or below -30°C, installation altitude above 4000m - Pole-changeable motors 																
Marking	<ul style="list-style-type: none"> - IE3 Energy Efficiency Level - CC-number of US Department of Energy 																
Solutions from Lenze																	
Three-phase AC motors	<table border="0"> <tr> <td>0.12 ... 0.55 kW</td> <td>m550-H IE2-high efficiency motors</td> </tr> <tr> <td>0.75 ... 22 kW</td> <td>m550-P IE3-premium efficiency motors</td> </tr> <tr> <td>30.0 ... 55 kW</td> <td>m540-P IE3-premium efficiency motors</td> </tr> <tr> <td>0.37 ... 11 kW</td> <td>m550-U IE5-ultra premium efficiency motors</td> </tr> <tr> <td>0.25 ... 7.5 kW</td> <td>m550-V IE6-ultra premium efficiency motors</td> </tr> <tr> <td>0.75 ... 22 kW</td> <td>m650-U IE5-ultra premium efficiency motors</td> </tr> <tr> <td>0.55 ... 22 kW</td> <td>MF inverter-optimized AC motors</td> </tr> <tr> <td>0.47 ... 1.36 kW</td> <td>m300 Lenze Smart Motors</td> </tr> </table>	0.12 ... 0.55 kW	m550-H IE2-high efficiency motors	0.75 ... 22 kW	m550-P IE3-premium efficiency motors	30.0 ... 55 kW	m540-P IE3-premium efficiency motors	0.37 ... 11 kW	m550-U IE5-ultra premium efficiency motors	0.25 ... 7.5 kW	m550-V IE6-ultra premium efficiency motors	0.75 ... 22 kW	m650-U IE5-ultra premium efficiency motors	0.55 ... 22 kW	MF inverter-optimized AC motors	0.47 ... 1.36 kW	m300 Lenze Smart Motors
0.12 ... 0.55 kW	m550-H IE2-high efficiency motors																
0.75 ... 22 kW	m550-P IE3-premium efficiency motors																
30.0 ... 55 kW	m540-P IE3-premium efficiency motors																
0.37 ... 11 kW	m550-U IE5-ultra premium efficiency motors																
0.25 ... 7.5 kW	m550-V IE6-ultra premium efficiency motors																
0.75 ... 22 kW	m650-U IE5-ultra premium efficiency motors																
0.55 ... 22 kW	MF inverter-optimized AC motors																
0.47 ... 1.36 kW	m300 Lenze Smart Motors																
Asynchronous servo motors	<table border="0"> <tr> <td>0.075 ... 0.6 kW</td> <td>SDSGA asynchronous servo motors</td> </tr> <tr> <td>0.80 ... 53.8 kW</td> <td>MCA asynchronous servo motors</td> </tr> <tr> <td>10.6 ... 60.2 kW</td> <td>MQA asynchronous servo motors</td> </tr> </table>	0.075 ... 0.6 kW	SDSGA asynchronous servo motors	0.80 ... 53.8 kW	MCA asynchronous servo motors	10.6 ... 60.2 kW	MQA asynchronous servo motors										
0.075 ... 0.6 kW	SDSGA asynchronous servo motors																
0.80 ... 53.8 kW	MCA asynchronous servo motors																
10.6 ... 60.2 kW	MQA asynchronous servo motors																
Synchronous servo motor	<table border="0"> <tr> <td>0.11 ... 9.20 kW</td> <td>m850 synchronous servo motors</td> </tr> <tr> <td>0.25 ... 15.8 kW</td> <td>MCS synchronous servo motors</td> </tr> </table>	0.11 ... 9.20 kW	m850 synchronous servo motors	0.25 ... 15.8 kW	MCS synchronous servo motors												
0.11 ... 9.20 kW	m850 synchronous servo motors																
0.25 ... 15.8 kW	MCS synchronous servo motors																



Individual Information per region/countries

January 2026

This overview represents a non-binding overview of the known valid regulations at the date of creation. No legal claim or compensation can be derived from this in the event of different legislation or application.

