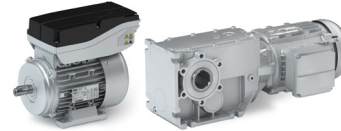



Country Fact Sheet Motors

South Korea



Regional Characteristics																	
Voltage	3 ~ 380V (440V) ± 10% 1 ~ 220V ± 10%																
Frequency	60 Hz																
Approval Mark																	
Korea Certification (KC)																	
Standard	KS C IEC 60034																
Scope	Electric motors are required to comply with the applicable Korean EMV and safety standards and mandatory registration before they are imported to, distributed, or sold in Korea.																
Marking	 KC Mark																
Energy Efficiency																	
Korea Energy Label (KEL)																	
Regional Standard	KS C IEC 60034-2-1 (2008)																
Regulation	MOTIE Notification No. 2020-225																
Mandatory Efficiency Class	IE3																
Scope	<ul style="list-style-type: none"> - Rated output power from (0.75 kW) up to (375 kW) - Rated voltage up to 600 V - Rated frequency 50 and 60 Hz - 2-, 4-, 6- and 8-pole - For continuous duty operation 																
Exemptions	<ul style="list-style-type: none"> - IShort-time duty S2 - Inverter duty - Motors for heavy environmental conditions like ambient temperature above +50°C or below -15°C - Pole-changeable motors 																
Marking	<ul style="list-style-type: none"> - Korea Energy Label if affected - Non-Korea Energy Label if in the scope but excepted 																
Solutions from Lenze																	
Three-phase AC motors	<table border="0"> <tr> <td>0.12 ... 0.55 kW</td> <td>m550-H IE2-high efficiency motors</td> </tr> <tr> <td>0.75 ... 22.0 kW</td> <td>m550-P IE3-premium efficiency motors</td> </tr> <tr> <td>30.0 ... 55.0 kW</td> <td>m540-P IE3-premium efficiency motors</td> </tr> <tr> <td>0.37 ... 11 kW</td> <td>m550-U IE5-ultra premium efficiency motors</td> </tr> <tr> <td>0.25 ... 7.5 kW</td> <td>m550-V IE6-ultra premium efficiency motors</td> </tr> <tr> <td>0.75 ... 22 kW</td> <td>m650-U IE5-ultra premium efficiency motors</td> </tr> <tr> <td>0.55 ... 22.0 kW</td> <td>MF inverter-optimized AC motors</td> </tr> <tr> <td>0.47 ... 1.36 kW</td> <td>m300 Lenze Smart Motors</td> </tr> </table>	0.12 ... 0.55 kW	m550-H IE2-high efficiency motors	0.75 ... 22.0 kW	m550-P IE3-premium efficiency motors	30.0 ... 55.0 kW	m540-P IE3-premium efficiency motors	0.37 ... 11 kW	m550-U IE5-ultra premium efficiency motors	0.25 ... 7.5 kW	m550-V IE6-ultra premium efficiency motors	0.75 ... 22 kW	m650-U IE5-ultra premium efficiency motors	0.55 ... 22.0 kW	MF inverter-optimized AC motors	0.47 ... 1.36 kW	m300 Lenze Smart Motors
0.12 ... 0.55 kW	m550-H IE2-high efficiency motors																
0.75 ... 22.0 kW	m550-P IE3-premium efficiency motors																
30.0 ... 55.0 kW	m540-P IE3-premium efficiency motors																
0.37 ... 11 kW	m550-U IE5-ultra premium efficiency motors																
0.25 ... 7.5 kW	m550-V IE6-ultra premium efficiency motors																
0.75 ... 22 kW	m650-U IE5-ultra premium efficiency motors																
0.55 ... 22.0 kW	MF inverter-optimized AC motors																
0.47 ... 1.36 kW	m300 Lenze Smart Motors																
Asynchronous servo motors	<table border="0"> <tr> <td>0.075 ... 0.6 kW</td> <td>SDSGA asynchronous servo motors</td> </tr> <tr> <td>0.80 ... 53.8 kW</td> <td>MCA asynchronous servo motors</td> </tr> <tr> <td>10.6 ... 60.2 kW</td> <td>MQA asynchronous servo motors</td> </tr> </table>	0.075 ... 0.6 kW	SDSGA asynchronous servo motors	0.80 ... 53.8 kW	MCA asynchronous servo motors	10.6 ... 60.2 kW	MQA asynchronous servo motors										
0.075 ... 0.6 kW	SDSGA asynchronous servo motors																
0.80 ... 53.8 kW	MCA asynchronous servo motors																
10.6 ... 60.2 kW	MQA asynchronous servo motors																
Synchronous servo motor	<table border="0"> <tr> <td>0.11 ... 9.20 kW</td> <td>m850 synchronous servo motors</td> </tr> <tr> <td>0.25 ... 15.8 kW</td> <td>MCS synchronous servo motors</td> </tr> </table>	0.11 ... 9.20 kW	m850 synchronous servo motors	0.25 ... 15.8 kW	MCS synchronous servo motors												
0.11 ... 9.20 kW	m850 synchronous servo motors																
0.25 ... 15.8 kW	MCS synchronous servo motors																



Individual Information per region/countries

January 2026

This overview represents a non-binding overview of the known valid regulations at the date of creation. No legal claim or compensation can be derived from this in the event of different legislation or application.

