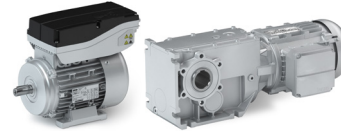


Country Fact Sheet Motors

China



Regional Characteristics		
Voltage	3 ~ 380V ± 10% 1 ~ 220V ± 10%	
Frequency	50 Hz	
Approval Mark	China Compulsory Certification	
Standard	GB 12350 GB 14711	
Regulation	CNCA-00C-008: 2019	
Scope	<ul style="list-style-type: none"> - Rated voltage from 36 V up to 1000 V - All kinds of AC asynchronous motors and AC synchronous motors with maximum continuous rating not exceeding 1.1 kW @1500 rpm - Not applicable for Ex-motors, servomotors and multi-speed motors with a rating exceeding the above applicable range 	
Marking		
Energy Efficiency		
China Energy Label		
Regional Standard	GB18613	GB 30253
Regulation	CEL 007-2021	CEL 038-2019
Mandatory Efficiency Class	Grade 3	Grade 3 (from 10/2026)
Scope	Asynchronous motor <ul style="list-style-type: none"> - Rated output power from (0.12 kW) up to (375 kW) - Rated voltage 380 V - Rated frequency 50 Hz - 2-, 4-, 6- and 8-pole - For continuous duty operation 	Permanent magnet synchronous motor <ul style="list-style-type: none"> - Rated output power from (0.55 kW) up to (90 kW) - Rated voltage below 1000 V - Rated speed 500 – 3000 rpm
Exemptions	<ul style="list-style-type: none"> - Intermittent duty like S3 or S6 (duty factor <80%) - Exclusively suitable for inverter operation - Ex-motors - Brake Motors (The brake is inside the motor housing) - Motors for heavy environmental conditions like ambient temperature above +60°C or below -30°C, installation altitude above 4000m - Pole-changeable motors - With Integral fans and blower motors 	<ul style="list-style-type: none"> - With independent fan - With the brake in the housing
Marking	<ul style="list-style-type: none"> - China Energy Label (CEL) from 0.12 kW up to 375 kW - Nominal efficiency (η) at 100 % load 	<ul style="list-style-type: none"> - China Energy Label (CEL) from 0.12 kW up to 90 kW - Nominal efficiency (η) at 100 % load
Solutions from Lenze		
Three-phase AC motors	0.75 ... 22 kW 30.0 ... 55 kW 0.55 ... 22 kW 0.47 ... 1.36 kW	m550-P IE3-premium efficiency motors m540-P IE3-premium efficiency motors MF inverter-optimized AC motors m300 Lenze Smart Motors
Synchronous motor	0.37 ... 11 kW 0.25 ... 7.5 kW 0.75 ... 22 kW	m550-U IE5- ultra premium efficiency motors m550-V IE6-ultra premium efficiency motors m650-U IE5-ultra premium efficiency motors
Asynchronous servo motors	0.075 ... 0.6 kW 0.80 ... 53.8 kW 10.6 ... 60.2 kW	SDSGA asynchronous servo motors MCA asynchronous servo motors MQA asynchronous servo motors
Synchronous servo motor	0.11 ... 9.20 kW 0.25 ... 15.8 kW	m850 synchronous servo motors MCS synchronous servo motors



Individual Information per region/countries

January 2026

This overview represents a non-binding overview of the known valid regulations at the date of creation. No legal claim or compensation can be derived from this in the event of different legislation or application.

