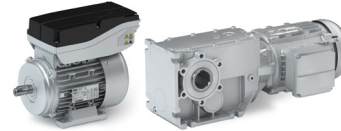


# Country Fact Sheet Motors

## Australia



Regional Characteristics	
Voltage	3 ~ 400 V ± 10% 1 ~ 230 V ± 10%
Frequency	50 Hz
<b>Energy Efficiency</b>	<b>GEMS</b>
Regional Standard	IEC 60034
Regulation	GEMS Determination 2018
Mandatory Efficiency Class	IE2
Scope	<ul style="list-style-type: none"> <li>- Rated output power from 0.73 up to 185 kW</li> <li>- Rated voltage up to 1100 V</li> <li>- Rated frequency 50 and 60 Hz</li> <li>- 2-, 4-, 6- and 8-pole</li> <li>- For continuous duty operation</li> </ul>
Exemptions	<ul style="list-style-type: none"> <li>- Short-time duty S2</li> <li>- Pole-changeable motors</li> <li>- Motors that share common components with the driven unit and cannot operate as a motor if separated from it</li> <li>- Motors specifically designed and specified to operate wholly immersed in a liquid</li> <li>- High slip motors, known as torque motors</li> </ul>
Marking	No Label but GEMS Registration
Solutions from Lenze	
Three-phase AC motors	0.12 ... 0.55 kW      m550-H IE2-high efficiency motors 0.75 ... 22 kW        m550-P IE3-premium efficiency motors 30.0 ... 55 kW        m540-P IE3-premium efficiency motors 0.37 ... 11 kW        m550-U IE5-ultra premium efficiency motors 0.25 ... 7.5 kW        m550-V IE6-ultra premium efficiency motors 0.75 ... 22 kW        m650-U IE5-ultra premium efficiency motors 0.55 ... 22 kW        MF inverter-optimized AC motors 0.47 ... 1.36 kW      m300 Lenze Smart Motors
Asynchronous servo motors	0.075 ... 0.6 kW      SDSGA asynchronous servo motors 0.80 ... 53.8 kW      MCA asynchronous servo motors 10.6 ... 60.2 kW      MQA asynchronous servo motors
Synchronous servo motor	0.11 ... 9.20 kW      m850 synchronous servo motors 0.25 ... 15.8 kW      MCS synchronous servo motors



Individual Information per region/countries

January 2026

This overview represents a non-binding overview of the known valid regulations at the date of creation. No legal claim or compensation can be derived from this in the event of different legislation or application.

