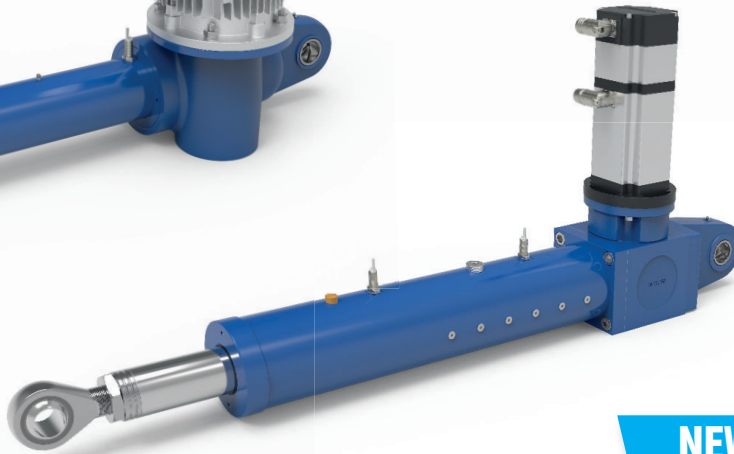
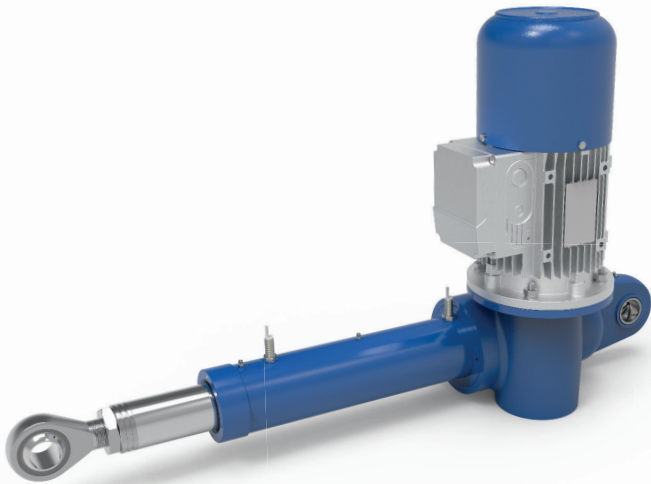
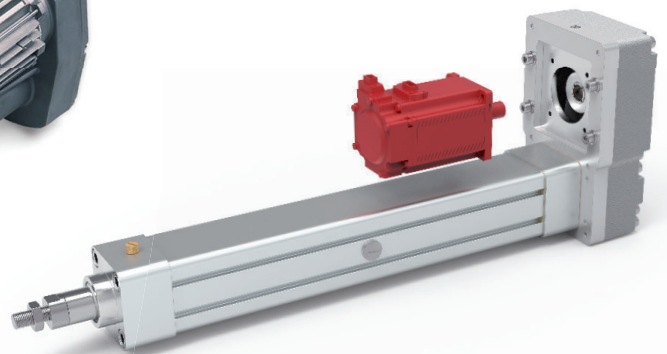
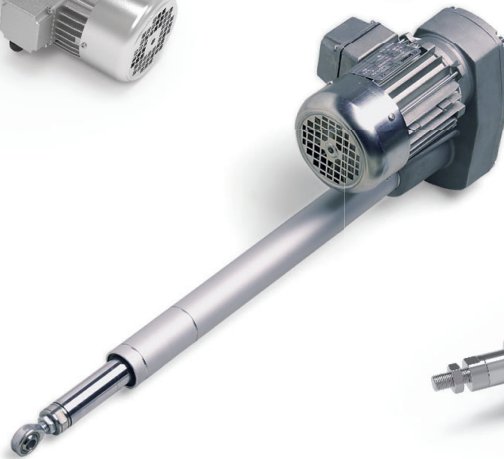


Electromechanical linear actuators

[MORE
PRODUCTIVITY,
LESS ENERGY
CONSUMPTION]



NEW



High quality production **100% Made in Servomech**
Acme screw, ball screw or planetary roller screw linear drive
Wide range of sizes and options available

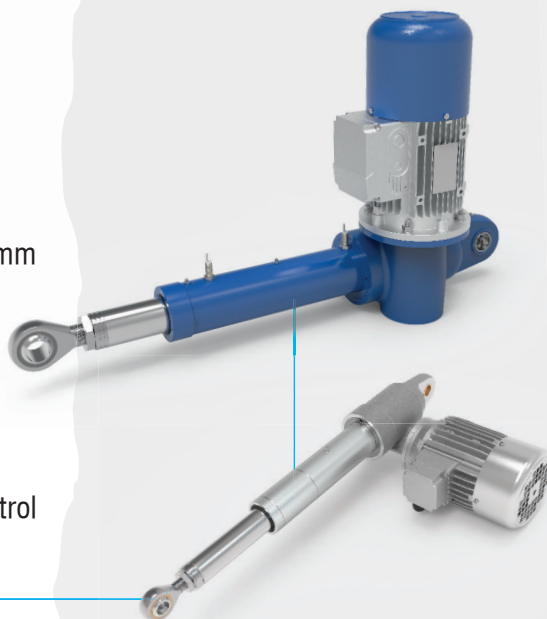
ATL SERIES BSA SERIES

Rear hinged mounting, right angle motor
High precision worm gearbox

ATL Series, acme screw from Ø 13,5 mm to Ø 100 mm
BSA Series, ball screw from Ø 14 mm to Ø 100 mm
10 sizes, load capacity from 4 kN to 350 kN
Standard stroke length up to 800 mm

Lubrication with synthetic grease, gearbox
long life lubricated, screw drive regreasable

Electric limit switches
Incremental or absolute encoder for positioning control
AC or DC motors
Prepared for brushless servomotors mounting



CLA SERIES CLB SERIES

Rear hinged mounting, right angle motor
High precision worm gearbox

CLA Series, acme screw from Ø 13,5 mm to Ø 30 mm
CLB Series, ball screw from Ø 14 mm to Ø 32 mm
5 sizes, load capacity from 2 kN to 25 kN
Standard stroke length up to 800 mm

Lubrication with synthetic grease, gearbox
long life lubricated, screw drive regreasable

Cam-operated limit switches and rotary potentiometer
for positioning control
AC or DC motors



UAL SERIES UBA SERIES

Rear hinged mounting, parallel motor
Timing belt drive

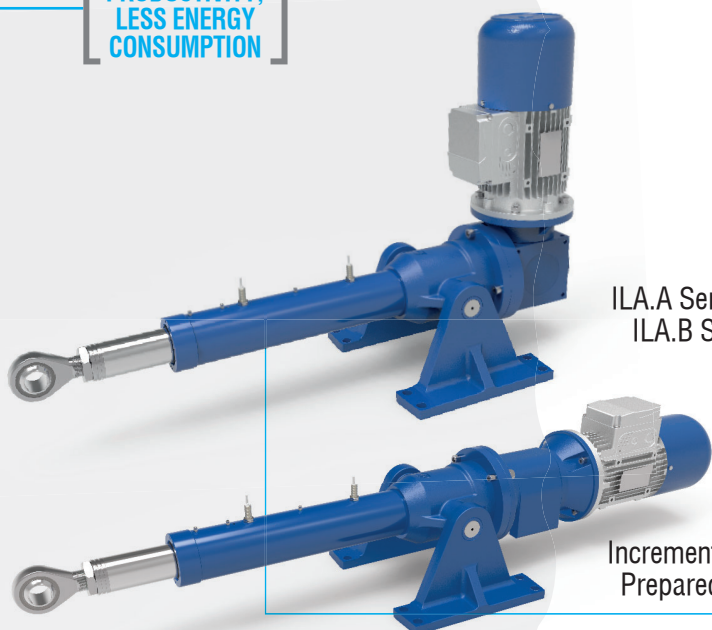
UAL Series, acme screw from Ø 13,5 mm to Ø 30 mm
UBA Series, ball screw from Ø 14 mm to Ø 32 mm
5 sizes, load capacity from 4 kN to 15 kN
Standard stroke length up to 800 mm

Lubrication with synthetic grease, gearbox
long life lubricated, screw drive regreasable

Electric limit switches
Incremental or absolute encoder for positioning control
AC or DC motors



**MORE
PRODUCTIVITY,
LESS ENERGY
CONSUMPTION**



ILA SERIES

Housing mounting with pins
In-line or right angle gearbox mounting

ILA.A Series, acme screw from Ø 22 mm to Ø 80 mm

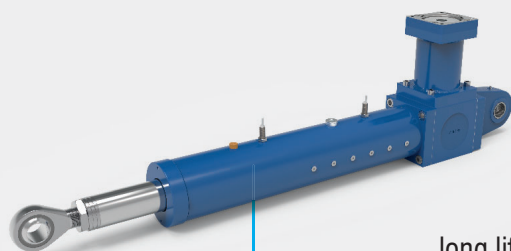
ILA.B Series, ball screw from Ø 25 mm to Ø 80 mm

6 sizes, load capacity from 15 kN to 200 kN

Standard stroke length up to 1500 mm

Screw drive lubrication
with synthetic grease, regreasable

Electric limit switches
Incremental or absolute encoder for positioning control
Prepared for AC or brushless servomotors mounting



HSA SERIES

Rear hinged mounting, right angle motor

GLEASON bevel gearbox

Linear speed up to 1,5 m/s

Ball screw drive from Ø 25 mm to Ø 80 mm

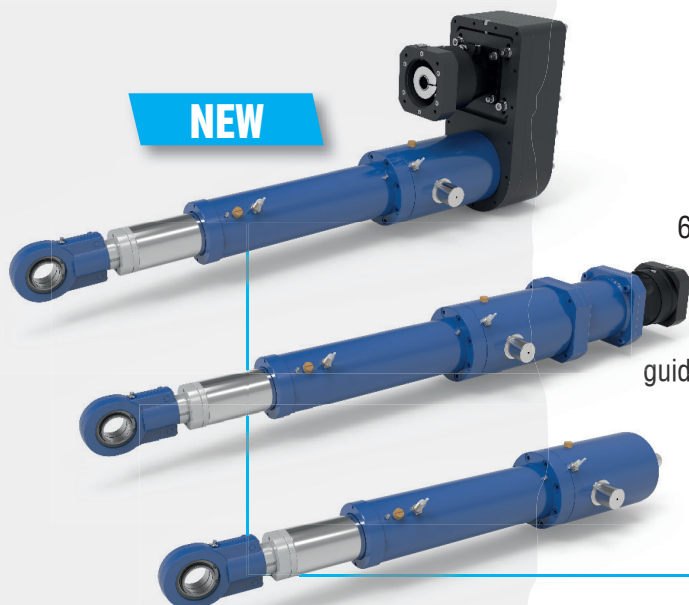
6 sizes, load capacity from 10 kN to 150 kN

Standard stroke length up to 1000 mm

Lubrication with synthetic grease, gearbox
long life lubricated, nut relubrication system with "homing" position

Electric limit switches
Incremental or absolute encoder for positioning control
Prepared for AC or brushless servomotors mounting

NEW



HPA SERIES

Housing mounting with pins

In-line or parallel motor mounting

Planetary gearbox

Planetary roller screw drive

from Ø 30 mm to Ø 99 mm

6 sizes, load capacity from 100 kN to 1000 kN

Standard stroke length up to 1000 mm

Lubrication with synthetic grease,
gearbox long life lubricated, nut and rod
guide relubrication system with "homing" position

Electric limit switches
Incremental or absolute encoder
for positioning control
Prepared for AC or brushless
servomotors mounting

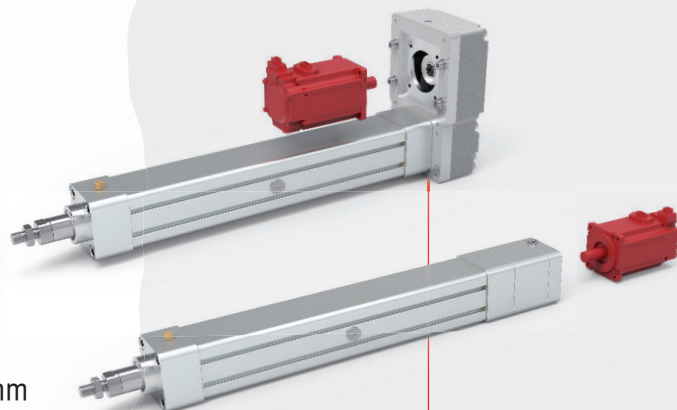
SAM SERIES

High precision ball screw drive
Low inertia and zero backlash
Extreme positioning control
Excellent for high dynamics and high speed conditions

Parallel or in-line motor
Prepared for brushless servomotors mounting
Linear speed up to 1,5 m/s

7 sizes, ball screw from Ø 12 mm to Ø 40 mm
ISO 15552 profile from Ø 32 mm to Ø 125 mm
ISO 15552 standard accessories

Nut relubrication system with "homing" position
Electric limit switches



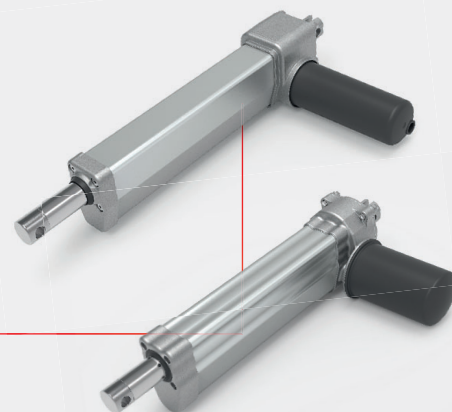
Electromechanical linear actuators

LMR SERIES

Linear actuator with right angle motor
Rear hinged mounting

Acme screw linear drive
Input drive with worm gearbox
3 sizes, load capacity from 1300 N to 6000 N

Integrated electric limit switches
Incremental encoder for positioning control
DC motors

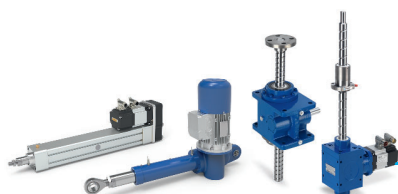


ATL SERIES

Linear actuator with right angle motor
Rear hinged mounting

Acme screw linear drive
Input drive with worm gearbox
5 sizes, load capacity from 1000 N to 10000 N

Electric limit switches
AC or DC motors



High quality production
100% Made in Servomech

SERVOMECH SpA
Via Calari, 1 • 40011 Anzola dell'Emilia (BO) • Italy

www.servomech.com

